

INSTRUCTION

OIL BUCKET PUMP

STB-700 ITEM No.881244



WARNING

Prior to operating this pump, be sure to read this operation manual for safety. After reading the manual, please keep it at hand any time for your quick reference.

YAMADA CORPORATION

- Preface

Thank you for purchasing a Yamada Pump.

This is a portable hand-operated lever oil bucket pump delivering oils such as gear oil, motor oil, and machine oil.

This product has a reservoir that can accommodate a large amount of oil, and can be used outdoors where no compressor is available.

This product is designed for oil transferring. Therefore, it cannot be used for grease.

- For Safe Operation

This manual describes the items that are important for the user to operate this product safely, correctly, and efficiently. Before operating this product, read this manual thoroughly, in particular, "Warnings and Cautions" at the beginning of this manual.

- Warnings and Cautions

For safe use of this product, be sure to note the following: In this document, warnings and cautions are indicated by symbols. These symbols are for those who will operate this product and for those who will be nearby, for safe operation and for prevention of personal injury and property damage. The following warning and caution symbols have the meanings described below. Be sure to remember their meanings.



WARNING : This indicates the existence of potential hazard which, if not avoided, will result in death or serious injury.



CAUTION : This indicates the existence of potential hazard which, if not avoided, may result in bodily injury or in physical damage.

Furthermore, to indicate the type of danger and damage, the following symbols are also used along with those mentioned above:



This symbol indicates a DON'T, and will be accompanied by an explanation on something you must not do.



This symbol indicates a DO, and will be accompanied by instructions on something you must do in a certain situation.

- Precautions on Use

The following warnings and cautions are very important. Be sure to observe them.



WARNING



- Gasoline is a high-volatility fuel. Do not use it to clean the pump in any case. Otherwise, ignition or explosion may be caused.



- Some types of oil to be used may contain carcinogens. Read the precautions provided by oil manufacturer thoroughly and handle the oil with care.



- Always wear proper protective equipments (gloves, protective glasses, protective shoes, etc.) when operating this product.



- In case of contact of the liquid with eyes, immediately consult an ophthalmologist and take a proper treatment. After contact with skins, wash immediately with water and soap. Otherwise, it will cause inflammation.

**CAUTION**

- This is a lubricant oil pump suitable for lubricant oil such as gear oil, motor oil, and machine oil. DO NOT use with gasoline, light oil, heating oil, or any other solvents.



- Be sure to establish a grounding connection to prevent shock caused by static electric spark.



- Do not use or leave this product in a slope or any unstable locations. It will make the product and the container fall and will cause spillage, which will pollute the environment.



- When taking the pump out of the oil container, pay some extra attention not to make your clothes dirty as the oil remaining inside the pump or on the outer surface of the pump may drop.



- Be careful not to get your fingers caught between the lever and the stopper when moving the lever. Otherwise, it will cause injuries on your fingers.



- When putting the lid on the oil container or fixing the lid with a clamp, pay extra attention not to get your fingers stuck there.



- When lifting the pump up to transfer the oil and so on, be careful not to drop it. If attempting to receive the pump falling to the ground, it may cause injuries on your hands with the edge of the pump.



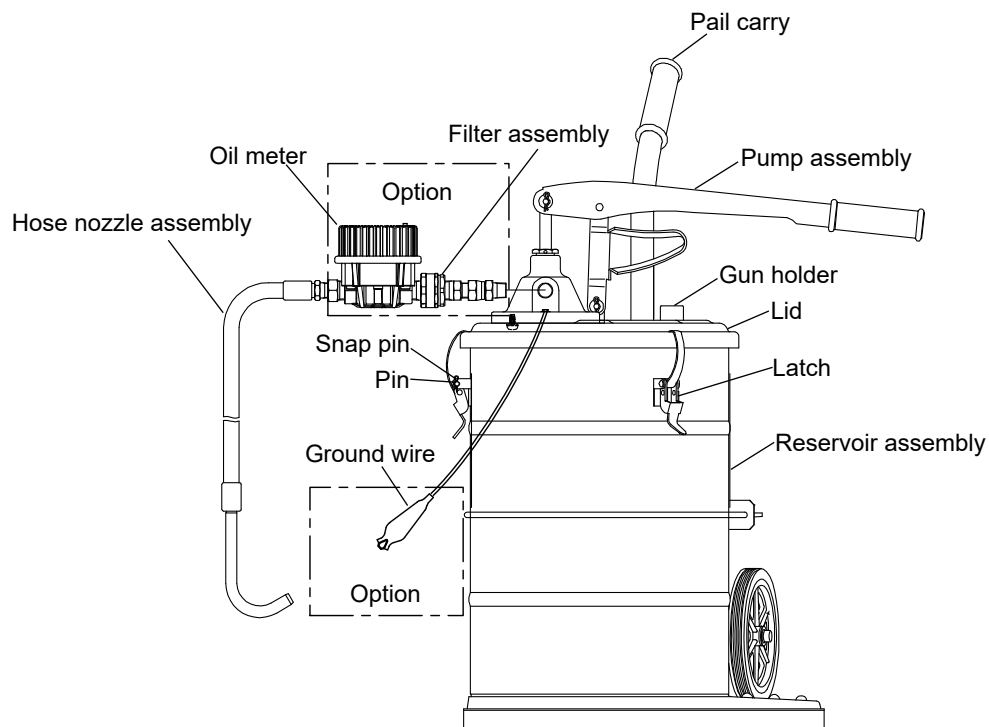
- When taking out the Latch, it may suddenly open up high, which will cause injuries to your hands.

Table of Contents

- Preface	
- For Safe Operation	
- Warnings and Cautions	
- Precautions on Use	
1. Names of Parts	
1.1 Names of Parts	1
1.2 Contents of Package	1
2. Preparations before Operation.....	2
3. How to Operate the Pump	2
4. Maintenance and Inspection	
4.1 Troubleshooting and Corrective Measures	3
4.2 Maintenance and Inspection	3
4.3 Disassembly and Assembly	3
5. Parts Disassembly Drawing and Parts List	
5.1 881244 Oil Bucket Pump	4
5.2 851110 Hand Pump Assembly	4
6. Main Specifications	5
7. Limited Warranty	6

1. Names of Parts

1.1 Names of Parts



1.2 Contents of Package

Please make sure no damage during shipment and no missing accessories after unpacking as soon as possible.

Please make sure no loose screws, piping connections, and fastener components.

Please retighten if any screws, piping connections, and fastener components are loose.

2. Preparations before Operation

CAUTION



- Apply sealing compound or sealing tapes to the male screws and tighten tightly when the pipes are connected.
Be careful not to allow the sealing materials to enter the piping.
Do not apply the tip of the terminal (two thread ridges) to maintain conductive property of the ground. (However, no applying is necessary if it will be connected to the hose union.)
Check that there is no leakage or electrical continuity in each part after connecting the piping.

<Assembly of Pail Carry>

Properly assemble the pail carry by referring to "2. Assembly Procedures" in the Assembly Instruction (Doc. No. OSA 136P).

<Assembly>

- 1) Attach hose nozzle assembly to the oil discharge port and tighten with a wrench. (Fig. 1)

<NOTE>

When using the oil meter(option), install it between the oil discharge port and the hose nozzle assembly.



Fig.1

<To Fill Reservoir>

- 2) Release three latches on the top of reservoir. (Fig. 2)
- 3) Remove lid together with pump assembly.

<NOTE>

Prevent dirt particles from being sucked into the suction port.

- 4) Wipe off reservoir with a clean cloth before filling it with lubricant.
Then, pour lubricant into reservoir. (Fig. 3)
Make sure to fill about two thirds of container. Lubricant, if reservoir is full, may spill when pump is in motion.
- 5) Wipe the suction port of pump assembly. Mount lid and secure three latches. In this time, set lever at appropriate position.



Fig.2

3. How to Operate the Pump

- 1) Wipe tip of nozzle and a filler port of equipment you are going to lubricate.
- 2) Place nozzle tip on a filler port. Step on the footboard to keep container from moving. Slowly push lever up and down several times so that oil will come out of nozzle.

<NOTE>

When using an oil meter(option), reset to 0 by pressing Reset Button. (Fig. 4)
Refer to the instruction (Doc. No. OSA 137U) for the details of how to use the oil meter.

- 3) Once finish discharging the oil, place the handle down and insert the nozzle into the gun holder on the lid.

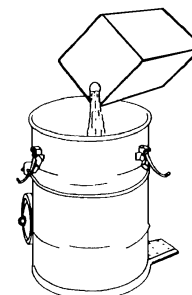


Fig.3



Fig.4

4. Maintenance and Inspection

4.1 Troubleshooting and Corrective Measures

SYMPTOM	POSSIBLE CAUSE	CORRECTIVE MEASURE
Pump delivers no oil	Reservoir is empty.	Fill reservoir.
	The foot valve is clogged with dust.	Check and clean the foot valve.
Insufficient flow	The foot valve is clogged with dust.	Check and clean the foot valve.
	Wear-out of plunger packing.	Replace packing.
	The filter of the oil meter is clogged with dust.	Clean the filter.
Oil leaks from gland	Wear-out of gland packing.	Tighten gland or replace packing.

4.2 Maintenance and Inspection

- If the lever becomes stiff to move, loosen the gland a little, apply a few drops of oil to it and retighten. (Fig.5)
- Check hose periodically and replace it if it is aged or leaking.

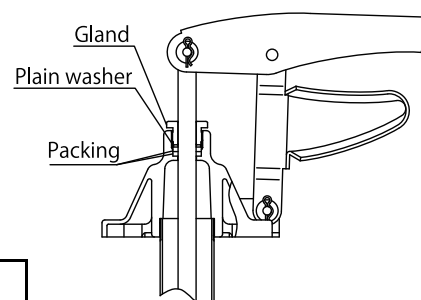


Fig.5

4.3 Disassembly and Assembly

CAUTION

- Gasoline is a high-volatility fuel. Do not use it to clean the pump in any case. Otherwise, ignition or explosion may be caused.

[Foot Valve]

- 1) Unscrew hose nozzle assembly.
- 2) Release three latches on the top of reservoir and remove lid together with pump assembly.
- 3) Unscrew four screw on the back of lid to separate pump assembly from lid.
- 4) Clamp knurled section of suction tube in a vise.

At this point, DO NOT fix in a vise the part where the plunger moves up and down (approx. 20 cm from the bottom).

- 5) Turn foot valve with a wrench and check it. Wash foot valve if it is clogged with dirt. (Fig.6)

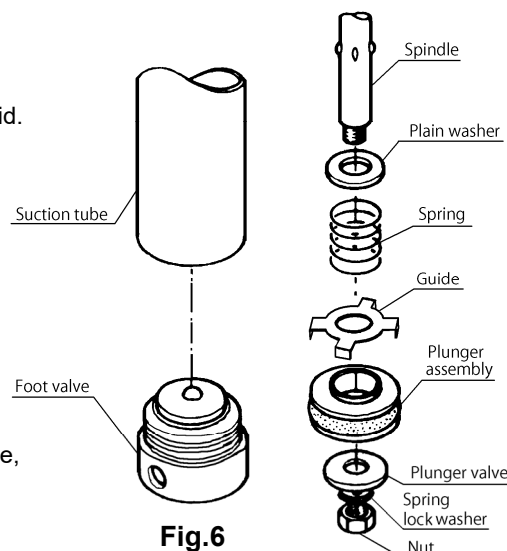


Fig.6

Fig.7

[Plunger Packing]

- 6) Clamp pump body in a vise and turn suction tube with a wrench to separate from pump body.
- 7) Unscrew nut on the end of spindle; then spring lock washer, plunger valve, plunger assembly, guide, spring, and plain washer will be separated from spindle. (Fig.7)
- 8) Clean and check each part of plunger assembly and replace damaged or worn parts.
- 9) Reverse the disassemble procedure to reassemble while being certain that each part is attached in the correct direction.

[Filter (Option)]

- 10) Unscrew filter housing to separate packing and filters from filter assembly. (Fig.8)
- 11) Check filters and clean them if they are clogged with dirt.
- 12) Reassemble filter assembly while being careful to attach filters in the correct order.

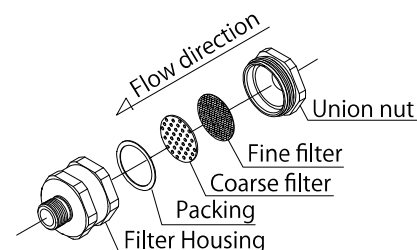
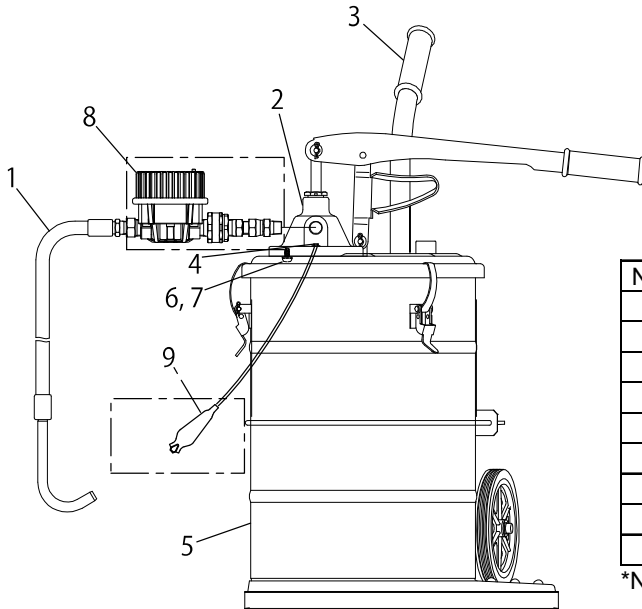


Fig.8

5. Parts Disassembly Drawing and Parts List

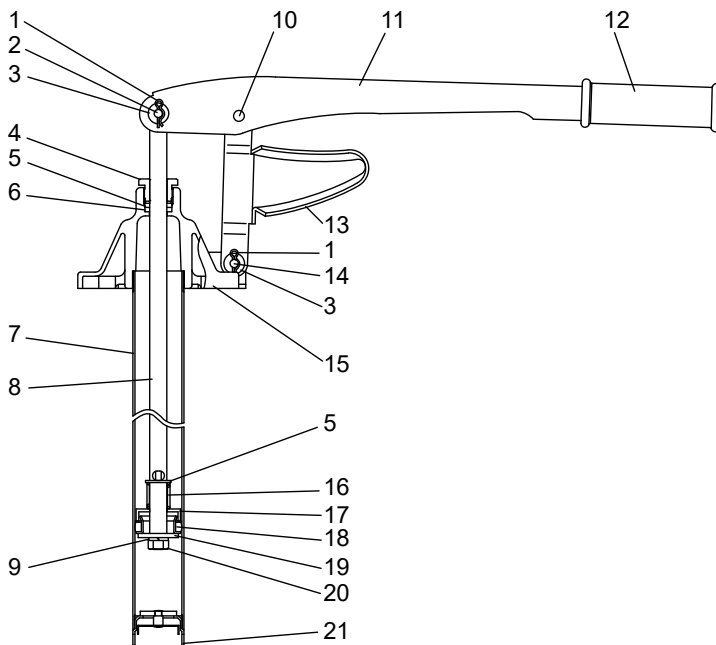
5.1 881244 Oil Bucket Pump



No.	Part No.	Description	Q'ty
1	695453	HOSE	1
2	851110	PUMP ASSEMBLY	1
3	855470	PAIL CARRY	1
4	682636	SCREW	1
5	855472	RESERVOIR ASSEMBLY	1
6	681770	CONED DISK SPRING	1
7	681771	SCREW	1
8	805339	OIL METER	1
9	681769	GROUND WIRE	1

*No.8 Oil meter , No.9 Ground wire is option.

5.2 851110 Hand Pump Assembly



No.	Part No.	Description	Q'ty
1	680608	SNAP PIN	2
2	703578	PIN	1
3	631012	PLAIN WASHER	2
4	580994	GLAND	1
5	701755	PLAIN WASHER	2
6	770333	PACKING	2
7	708312	SUCTION TUBE	1
8	715316	SPINDLE	1
9	631420	SPRING LOCK WASHER	1
10	702559	PIN	1
11	703177	HANDLE	1
12	770494	HANDLE GRIP	1
13	830268	TOGGLE ASSEMBLY	1
14	703579	PIN	1
15	708314	BODY	1
16	702020	SPRING	1
17	715315	PISTON GUIDE	1
18	830483	PLUNGER ASSEMBLY	1
19	703180	PLUNGER VALVE	1
20	627012	NUT	1
21	830269	FOOT VALVE ASSEMBLY	1

6. Main Specifications

■ Specification

Type	STB-700
Item No.	881244
Height	943 mm
Weight	9.5 kg
Reservoir capacity	20 L
Accessories	695453 Oil Hose (Blak 2 m) with Nozzle 1 855470 Pail carry 1
Option	805339 Oil meter with filter 681769 Ground wire

■ Pump Performance (Reference)

Discharge Volume*	Stroke
40 mL / stroke	50 mm

※Is the volume at the nozzle outlet based on the following conditions.

Material	Oil Temperature	Hose
Machine oil #160	20 °C	Standard hose

7. Limited Warranty

If an abnormality occurs during normal operation in accordance with the operating instructions and other operating cautions within the warranty period (12 months after date of purchase) that can be attributed to a manufacturing defect, the defective parts of this product will be serviced or the product will be replaced free of charge. However, this warranty will not cover compensation for incidental damage or any malfunction listed below.

1. Warranty period

This warranty will be valid for a period of 12 months after the date of purchase.

2. Warranty

If, during the warranty period, any of the material of the genuine parts of this product or the workmanship of this product is found defective, and is so verified by our company, the servicing cost will be fully born by our company.

3. Exclusion

Even during the warranty period, this warranty does not cover the following.

- 1) Malfunction arising from use of parts other than manufacturer-specified genuine parts
- 2) Malfunction arising from misuse or operating errors, or lack of storage or maintenance care
- 3) Malfunction arising from use with a fluid that may cause corrosion, inflation or dissolution of the component parts of the product
- 4) Irregularity arising from repair made by other than by our firm, our regional office, dealer or authorized service personnel
- 5) Malfunction arising from modification of the product by other than authorized service personnel
- 6) Wear and tear of parts that must be regularly replaced in the course of normal operation, such as packings, O-rings and hose.
- 7) Malfunction and/or damage due to use with incorrect voltage.
- 8) Malfunction and/or damage due to transportation, moving or drop page of the product after purchase
- 9) Malfunction and/or damage due to fire, earthquake, flood or other force majeure
- 10) Malfunction arising from use of compressed air that contains impurities or excessive moisture, or use of gases or fluids other than the specified compressed air
- 11) Malfunction arising from use of excessively abrasive material or of inadequate grease.

Furthermore, this warranty does not cover the rubber parts, or other parts used in this product and its accessories, which are subject to wear in normal operation.

- hoses • packings • cords

4. Parts

Parts for this product will be kept available for 5 years after discontinuation of production. Once 5 years have elapsed after close of production, availability of parts for this product cannot be guaranteed.

YAMADA CORPORATION

INTERNATIONAL DEPARTMENT

1-1-3, Minami-Magome, Ota ku, Tokyo, 143-8504, Japan

PHONE : +81-(0)3-3777-0241

FAX : +81-(0)3-3777-0584

E-mail : intl@yamadacorp.co.jp

Web : www.yamadacorp.co.jp

YAMADA (THAILAND) CO., LTD

41/79 Moo 6, Bangcha-long, Bangplee, Sumutprakarn 10540, Thailand

PHONE : +66-(0)2-130-0990

FAX : +66-(0)2-130-0993

E-mail : sales@yamada-th.com